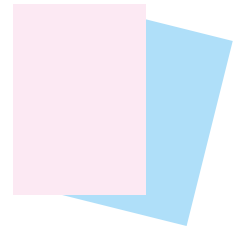
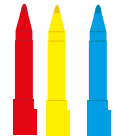


I Spy

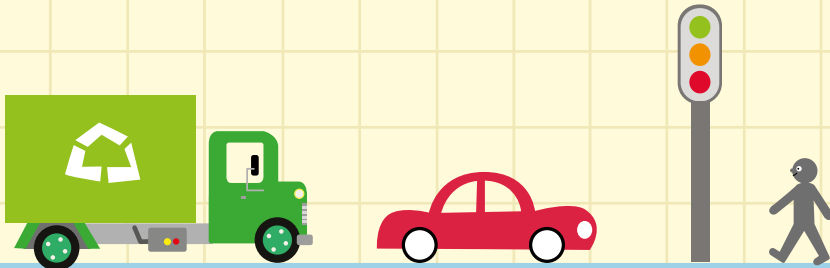
Sit by the window or during a car journey, make a tally of the amount of vehicles, bikes and pedestrians you can see. Try to identify the different modes of transport and which ones are more polluting than others. This activity introduces basic data collection and counting.



Paper

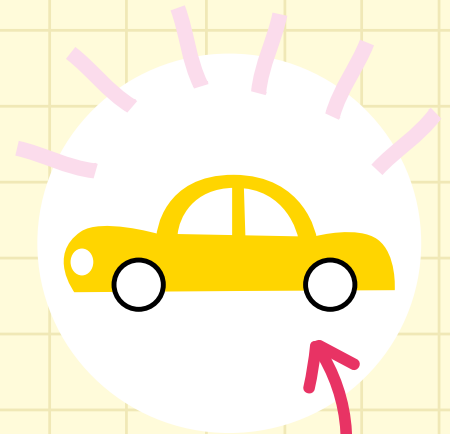


Pen or pencils



The Science

Air pollution from traffic fumes, factories, smoke and dust can affect our lungs and irritate our airways. Babies (even unborn babies) and young children are more vulnerable to air pollution as their lungs are still developing so on days when pollution levels are high it's best to avoid busy roads with lots of vehicles.



Top tip!

Add an extra challenge such as the first person to spot a yellow car.